

1 **PROPOSED POLICY**

2 **Zero Single-Use Plastics in the Mindanao State University-Main Campus**

3  
4 **Proponents** Office of the President  
5 Office of the Vice Chancellor for Research, Extension, Development  
6 Mindanao State University-Main Campus  
7

8 **Rationale**

9 This proposal intends to ban single-use plastics on Campus, which is imperative in combating the  
10 global environmental crisis we face today. These plastics are major contributors to pollution in our  
11 oceans, lakes, rivers, and landfills, leading to devastating impacts on marine life, ecosystems, and  
12 human health. Additionally, the production and disposal of single-use plastics contribute  
13 significantly to greenhouse gas emissions and climate change. By eliminating single-use plastics,  
14 we can reduce our reliance on fossil fuels, decrease waste in our environment, and ultimately work  
15 towards a more sustainable future. Governments, businesses, and individuals need to prioritize the  
16 transition to more eco-friendly alternatives to protect our planet for future generations. This  
17 endeavor is focused on diminishing the university’s environmental footprint, advancing  
18 sustainability, and cultivating responsible waste management habits in different clusters across  
19 the Campus premises, effective immediately.  
20

21 **ARTICLE I**  
22 **GENERAL PROVISIONS**

23 Sec. 1. *Short title.* – This policy shall otherwise be known as the “Zero Single-Use Plastics Policy.”

24 Sec. 2. *Declaration of policies.* It is the policy of the State to protect and advance the right of the  
25 people to a balanced and healthful ecology in accord with the rhythm and harmony of nature.  
26

27 Sec. 3. *Definition of terms.* As used in this Policy:

- 28 a. *Academic cluster* refers to buildings and facilities where instruction is the central  
29 activity such as classrooms, departments, college/school buildings, and libraries,  
30 among others.
- 31 b. *Administrative cluster* refers to offices and units of the Campus.
- 32 c. *Campus*, for the purpose of this Policy, refers to the Mindanao State University-Main  
33 Campus.
- 34 d. *Climate Change*, for the purpose of this Policy, refers to intensified climatic alterations  
35 or fluctuations of the natural environment as a result of unabated anthropogenic  
36 activities.
- 37 e. *Cluster*, for the purpose of this Policy, shall refer to any of the academic, administrative,  
38 commercial, recreational, or residential areas in the Campus.
- 39 f. *Commercial cluster* refers to establishments in the business sector of the Campus such  
40 as cafés, cafeterias, canteens, coffee shops, eateries, food stalls, restaurants, retailers,  
41 and stores, among others.
- 42 g. *Community*, for this Policy, shall refer private residents of communities within the  
43 Campus premises;
- 44 h. *Constituent*, for this Policy, shall refer to bona fide faculty, staff, students, and  
45 administrators of the Campus;
- 46 i. *Disposal* refers to the deposit, dumping, and/or placing of waste into an area or  
47 receptacle.
- 48 j. *Incentives* refer to any merit given by the Campus Plastic Waste Management Board for  
49 utmost compliance with the provisions stated in this Policy.

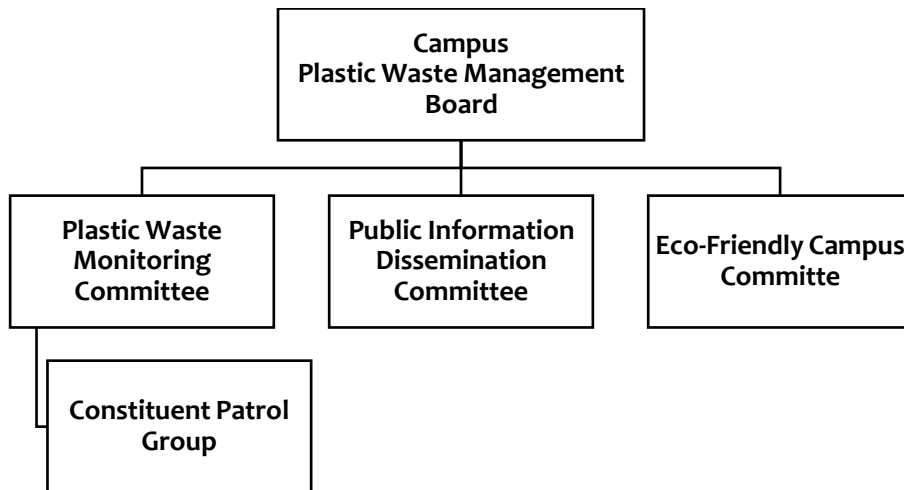
- 1 k. *Microplastics* refer to any plastic debris with a diameter measuring less than five (5)
- 2 micrometers.
- 3 l. *Plastic* refers to a lightweight, hygienic, and resistant material that can be molded in a
- 4 variety of ways and utilized in a wide range of applications.
- 5 m. *Plastic waste generation* refers to the amount of plastic waste material generated by a
- 6 particular source, or that enters the waste stream before final disposal.
- 7 n. *Recreational cluster* refers to buildings and facilities within the Campus, such as
- 8 gymnasium, function halls, grandstand, track and field oval, sports courts (i.e.,
- 9 basketball, volleyball, lawn tennis), and golf course, among others.
- 10 o. *Recyclable Material* refers to any waste material retrieved from the waste stream and
- 11 free from contamination that can still be converted into suitable beneficial use or for
- 12 other purposes, including, but not limited to, newspaper, ferrous scrap metal, non-
- 13 ferrous scrap metal, used oil, corrugated cardboard, aluminum, glass, office paper, tin
- 14 cans, and other materials as may be determined by the National Solid Waste
- 15 Management Commission.
- 16 p. *Recycled Material* refers to post-consumer material that has been recycled and
- 17 returned to the economy.
- 18 q. *Recycling* refers to the treating of used or waste materials through a process of making
- 19 them suitable for beneficial use and other purposes, and includes any process by which
- 20 solid waste materials are transformed into new products in such a manner that the
- 21 original products may lose their identity, and which may be used as raw materials for
- 22 the production of other goods or services: Provided, That the collection, segregation
- 23 and re-use of previously used packaging material shall be deemed recycling under the
- 24 Ecological Solid Waste Management Act of 2000 (RA 9003).
- 25 r. *Residential cluster* refers to dormitories, cottages, houses, apartments, hotels, and
- 26 hostels, among others, that are situated within the territorial jurisdiction of the
- 27 Campus.
- 28 s. *Retailer* refers to a person engaged in the business of selling consumer products
- 29 directly to consumers.
- 30 t. *Single-use Plastics*, also referred to as disposable plastics, are commonly used for plastic
- 31 packaging and include items intended to be used only ONCE before they are thrown
- 32 away or recycled.
- 33 u. *Sustainable Development Goals* refer to the 17 integrated goals adopted by the United
- 34 Nations in 2015 as a universal call to action to end poverty, protect the planet, and
- 35 ensure that by 2030 all people enjoy peace and prosperity.
- 36 v. *Upcycling* refers to the process of converting by-products, waste materials, or
- 37 unwanted products into new materials or items that are seen as possessing superior
- 38 quality, whether in terms of artistic or environmental significance.

39  
 40 Sec. 4. *Scope and Application*. – The policy shall apply to the prohibition of importation of single-  
 41 use plastics to the Campus premises; the usage within its respective clusters thereof, as defined in  
 42 Section 3 of this Policy; and the accompanying incentives and penalties for its compliance, or  
 43 otherwise.

44  
 45 **ARTICLE II**  
 46 **CAMPUS PLASTIC WASTE MANAGEMENT BOARD**

47  
 48 Sec. 5. *Campus Plastic Waste Management Board [CPWMB]*. – There is hereby created a Campus  
 Plastic Waste Management Board, hereinafter referred to as the Plastic Board, with three (3)  
 committees under it namely 1) *Plastic Waste Monitoring Committee [PWMC]*, 2) *Public Information*  
*Dissemination Committee [PIDC]*, and 3) *Eco-Friendly Campus Committee [EFCC]*. The Plastic Board

1 shall be composed of a Chairperson, and five (5) Board Members, viz; three (3) heads of each  
 2 committee, one (1) head of Constituent Patrol Group [CPG], and one (1) plastic board secretary.  
 3 The CPWMB is under the direct administrative control and supervision of the University President.



4

5

a. Composition:

6

i. Chairperson

7

ii. 5 Board Members

8

(Heads of the 3 committees, Head of the Citizen Patrol, and Plastic Board Secretary)

9

10

11

b. Duties and Responsibilities:

12

i. Enforce the implementation of this Policy, as well as evaluate its effectiveness and compliance by the constituents.

13

ii. Formulate and propose a functional program roadmap on Zero Single-Use Plastic Policy in line with the MSU R&D Agenda, which is also responsive to the specific problems and opportunities faced by different types of plastic waste generators.

14

15

16

17

iii. Formulate and propose the implementing rules and regulations of this Policy, for approval by the University President.

18

19

iv. Review this Policy to ensure its management efficiency, sustainability, effectiveness, and relevance to the Ecological Solid Waste Management Act of 2000.

20

21

22

v. Recommend for internal funding research and extension project proposals single-use plastics that may decrease waste generation in the campus premises.

23

24

25

vi. Recommend to the President any supplemental policies particularly the operation of each committee, including their remunerations and privileges.

26

27

vii. Formulate a systematic strategy of incentives and penalties concerning compliance or non-compliance in the implementation of this Policy.

28

29

30

c. *Plastic Waste Monitoring Committee [PWMC].* This Committee shall be composed of three members and tasked to enforce, supervise, and regulate the implementation of this Policy, and evaluate its effectiveness and compliance by the constituents, including its sustainability. This committee shall submit the details of its operations for the approval of the President.

31

32

33

34

35

- 1 d. *Public Information Dissemination Committee [PIDC]*. This committee shall be composed  
2 of three members and tasked with developing strategies to effectively communicate  
3 with various stakeholders, including the media, government officials, and the general  
4 public. This committee shall submit the details of its operations for the approval of the  
5 President.  
6
- 7 e. *Eco-Friendly Campus Committee [EFCC]*. The committee shall be composed of three  
8 members and shall propose and/or endorse research, extension, and development  
9 program/project proposals to the CPWMB to help ensure the sustainability of this  
10 Policy. The committee shall also prepare and push the Campus  
11 i. For the national search for sustainable and eco-friendly schools program by the  
12 Department of Environment and Natural Resources, and the Commission on  
13 Higher Education;  
14 ii. For The Bangsamoro search for sustainable and eco-friendly schools program  
15 by the Ministry of Environment, Natural Resources, and Energy; and  
16 iii. To become a role model for schools, universities, and colleges in the  
17 Bangsamoro Autonomous Region in Muslim Mindanao for Zero Single-Use  
18 Plastics.  
19
- 20 f. *Constituent Patrol Group [CPG]*. The group composed of 3 members is hereby created  
21 to assist PWMC in the implementation of this Policy. The group shall submit the details  
22 of its operations for the approval of the President.  
23

24 For the purpose of enforcing the provisions of this policy or its implementing rules and  
25 regulations, any constituent may report to the Plastic Board through the CPG, and the  
26 latter, shall file an appropriate criminal, or administrative action only upon *prima facie*  
27 of any report of non-compliant, non-enforcement or violation complained of, against:  
28

- 29 i. Any entity/office/unit/cluster who violates or fails to comply with the  
30 provisions of this Policy and its implementing rules and regulations; or  
31  
32 ii. Any public officer who willfully or grossly neglects the performance of an  
33 act specifically enjoined as a duty by this Policy or its implementing rules  
34 and regulations; or who abuses his or her authority in the performance  
35 of his or her duty; or who, in any manner, improperly performs his or her  
36 duties under this Policy or it's implementing rules and regulations.

### 37 **ARTICLE III**

#### 38 **ZERO PLASTIC WASTE IMPLEMENTATION**

39 **Sec. 6. Single-Use Plastics.** The following **single-use plastics** are hereby prohibited within the  
40 Campus premises:

- 41 a. Balloons and sticks for balloons;  
42 b. Candy and gum wrappers;  
43 c. Cellophanes and Sando bags;  
44 d. Cigarette butts (from cigarette);  
45 e. Disposable food hand gloves;  
46 f. Doypacks;  
47 g. PET Bottles;  
48 h. Plastic confetti;  
49 i. Plastic cups and lid;

- 1 j. Plastic food wrappers (Clingwrap);
- 2 k. Plastic plates;
- 3 l. Plastic posters;
- 4 m. Plastic straws;
- 5 n. Plastic stirrers;
- 6 o. Plastic utensils;
- 7 p. Polystyrene (Styrofoam) cups and lid;
- 8 q. Polystyrene (Styrofoam) food containers; and
- 9 r. Tarpaulins

10 Sec. 7. *Timeline.* – The total prohibition of single-use plastics by all constituents of the University,  
11 as well as its community, shall be in full force and effect one (1) year from the effectivity of this  
12 Policy. The implementation, however, shall be done in six (6) phases to give ample time for all  
13 concerned offices, departments, colleges, and units to come up with a contingency plan in  
14 preparation for the total ban, to wit:

- 15
- 16 a. May 2024 – Conduct of Campus-wide awareness campaign.
- 17 b. August 2024 – Prohibition of single-use plastic items in all academic, administrative, and  
18 recreational clusters within the Campus premises.
- 19 c. December 2024 – Prohibition of single-use plastic items in Campus/University-related  
20 events (i.e., celebrations, meetings, seminars, trainings, etc.).
- 21 d. January 2025 – Prohibition of single-use plastic items in all commercial clusters within the  
22 Campus premises.
- 23 e. April 2025 – Prohibition of single-use plastic items in the residential cluster within the  
24 Campus premises.

25 Sec. 8. *Awareness Campaign.* The CPWMB, through the PIDT, shall launch an extensive awareness  
26 campaign to educate students, faculty, staff, and private individuals on campus about the negative  
27 environmental impacts of single-use plastics and the benefits of adopting sustainable practices on  
28 non-plastic usage. Signages and slogans promoting its non-usage will be displayed on strategic  
29 sites in each college/unit and on the Campus premises, in close collaboration with the concerned  
30 agencies, offices, and communities.

31

32 Sec. 9. *Monitoring and Evaluation.* The CPWMB, through the PWMC, in coordination with concerned  
33 agencies and offices, shall conduct regular inspection and monitoring of plastic waste generation  
34 from sources stated in Section 4 of this Policy.

35

36 Sec. 10. *Research, Extension, and Development.* – The Office of the Vice Chancellor for Research,  
37 Extension, and Development [OVCREd] shall include in their respective programs aligned with the  
38 MSU R&D Agenda, and consequently support, fund, and/or assist in fund-sourcing the conduct of  
39 research and extension projects that may include, but not limited to:

- 40 a. Alternative single-use packaging (i.e., natural polymers, biomass-based compostable  
41 biopolymers, etc.);
  - 42 b. Waste management strategies;
  - 43 c. Waste impact assessments;
  - 44 d. Life cycle assessments;
  - 45 e. Feasibility studies (i.e. willingness to pay, levies, tax, discount, dis/incentives, recommended  
46 rates); and
  - 47 f. Policy review studies.
- 48

1 Sec. 11. *Implementation of Alternatives.* – Recommend the use of reusable and sustainable  
2 alternatives such as stainless-steel water bottles, water flasks, biodegradable utensils,  
3 compostable straws, wooden utensils, eco-bags, and other natural biodegradable wrappers, bags,  
4 and containers.

5 **ARTICLE IV**  
6 **INCENTIVES AND PENALTIES**

7 Sec. 12. *Incentives for Plastic Alternatives Utilization.* – Any entity or cluster may enjoy the following  
8 merits for compliance with the provisions of this Policy:

- 9 a. Each cluster may craft its respective merit systems to encourage his/her  
10 clients/constituents/customers to follow the provisions of this Policy.  
11 b. For the business cluster, any person bringing his/her tumblers and containers will be  
12 given discounts by food court concessionaires owned by the Campus.  
13 c. Paper alternatives may be used by food concessionaires, but each item shall be  
14 bought/sold to the customer (e.g. PhP10.00 per food carton).  
15 d. Any cluster that has not incurred violations of any provision of this Policy shall be given  
16 a reward to be determined by the CPWMB which will be presented during Mindanao  
17 State University Foundation Day.

18 Sec. 13. *Penal Provisions.* – Any violation of this Policy, starting the first from the effectivity and as  
19 fully provided for under Section 3 of the same, shall be imposed the following penalties:

- 20  
21 a. Any single-use plastic product stated in Section 9 of this Policy carried by any person  
22 carrying shall be confiscated immediately before or upon entry to the Campus  
23 premises.  
24  
25 b. Any constituent who will be found within the Campus premises carrying or loitering  
26 the prohibited single-use plastics will be charged a fine that may go to the scholarship  
27 funds of the school, with the following penalties to be imposed:  
28 i. First offense – Citation ticket of a fine of one hundred pesos (PhP100.00), and  
29 confiscation of identification card.  
30 ii. Second offense – Citation ticket of a fine of three hundred pesos (PhP300.00),  
31 and confiscation of the identification card.  
32 iii. Third offense – Citation ticket of a fine of five hundred pesos (PhP500.00),  
33 confiscation of identification card, and written reprimand from the CPWMB.  
34 iv. Fourth offense – Citation ticket of a fine of one thousand pesos (PhP1,000.00),  
35 three-hour community service within the Campus premises (in the form of a  
36 clean-up drive), and oral reprimand from the CPWMB.  
37 v. Fifth offense – Citation ticket of a fine of One-Thousand Pesos (PhP1,000.00),  
38 one-day community service within the Campus premises (in the form of a clean-  
39 up drive), and oral reprimand from the President.  
40 vi. Repeated offenses by students shall be grounds for guidance counseling,  
41 together with the parents or guardian, and subsequent suspension from  
42 classes, or expulsion from the University, to be determined by the CPWMB.  
43 vii. Repeated offenses by a faculty member or administrative staff shall be  
44 equivalent to one (1) day absence per violation, and/or subsequent temporary  
45 suspension from service, and/or filing of necessary administrative and criminal  
46 charges, to be determined by the CPWMB.

1  
2  
3  
4  
5  
6  
7  
8  
9  
10  
11  
12  
13  
14  
15  
16  
17  
18  
19  
20  
21  
22  
23  
24  
25  
26  
27  
28  
29  
30  
31  
32  
33  
34  
35  
36  
37  
38  
39  
40  
41  
42  
43  
44  
45  
46  
47  
48  
49  
50

- c. On top of the violation conducted by the individual, any violations conducted within the premises of the academic, administrative, and/or residential clusters owned by the Campus, the following penalties shall be imposed:
  - i. First offense – Written reprimand from the CPWMB addressed to the head of unit/office.
  - ii. Second offense – Written reprimands from the CPWMB, the Office of the Vice Chancellor for Academic Affairs (for academic cluster), or the Office of the Vice Chancellor for Administration and Finance (for administrative, recreational, and residential clusters owned by Campus) addressed to the head of unit/office;
  - iii. Third offense – Oral reprimands from the CPWMB, the Office of the Vice Chancellor for Academic Affairs (for academic cluster), or the Office of the Vice Chancellor for Administration and Finance (for administrative, recreational, and residential clusters owned by Campus) addressed to the head of unit/office during the joint meeting;
  - iv. Fourth offense – Eight-hour clean-up drive within the place of violation attended by the entire office/unit/college/area constituents.
  - v. Fifth offense – Eight-hour Campus-wide clean-up drive within the place of violation attended by the entire office/unit/college/area constituents.
  - vi. Repeated offenses performed within the same office/unit/college/area shall be grounds for the temporary suspension from service of its head, and/or filing of necessary administrative and criminal charges, to be determined by the CPWMB.
  - vii. Repeated offenses by a faculty member or administrative staff shall be equivalent to one (1) day absence per violation, and/or subsequent suspension from service, or filing of necessary administrative and criminal charges, to be determined by the CPWMB.
  
- d. Any community member who will be found within the Campus premises carrying or loitering the prohibited single-use plastics will be charged a fine that may go to the scholarship funds of the school, with the following penalties to be imposed:
  - i. First offense – Citation ticket of a fine of One hundred pesos (PhP100.00), and Barangay report.
  - ii. Second offense – Citation ticket of a fine of Three Hundred Pesos (PhP300.00), and Barangay report;
  - iii. Third offense – Citation ticket of a fine of Five Hundred Pesos (PhP500.00), and written reprimand from the CPWMB and the Barangay.
  - iv. Fourth offense – Citation ticket of a fine of One-Thousand Pesos (PhP1,000.00), three-hour community service within the Campus premises (in the form of a clean-up drive), and oral reprimand from the Barangay.
  - v. Fifth offense – Citation ticket of a fine of One-Thousand Pesos (PhP1,000.00), one-day community service within the Campus premises (in the form of a clean-up drive), and written reprimand from the City Mayor.
  - vi. Repeated offenses by the community member/visitor shall be grounds for filing of necessary criminal charges, to be determined by the CPWMB.
  
- e. For commercial cluster, the following penalties shall be imposed:
  - i. First offense - A fine of Five Thousand Pesos (PhP5,000.00);
  - ii. Second offense - A fine of Ten Thousand Pesos (PhP10,000.00) and suspension of its business permit for one (1) month;

- 1           iii. Third offense - A fine of Twenty-Five Thousand Pesos (PhP25,000.00) and
- 2           suspension of its business permit for three (3) months;
- 3           iv. Fourth offense - A fine of Fifty Thousand Pesos (PhP50,000.00), confiscation of
- 4           single-use plastic items, and suspension of its business permit for six (6)
- 5           months; and
- 6           v. Fifth offense - A fine of One Hundred Thousand Pesos (PhP100,000.00) and
- 7           permanent suspension of its business permit. The said business permit shall not
- 8           be eligible for renewed application for 5 years. Thereafter, the LGU concerned
- 9           may grant the said store a business permit, provided its operator can show
- 10          steps and measures will be put in place to comply with this Policy.
- 11          vi. A further violation after the issuance of a new business permit shall perpetually
- 12          bar the said from conducting its business within the Campus premises.

13                                   **ARTICLE V**  
 14                                   FINAL PROVISION

15   Sec. 14. *Appropriations.* - Such amount as may be necessary to implement the provisions of this  
 16   Policy is hereby included in the annual appropriations of the Campus under the General  
 17   Appropriations Act [GAA]. There is a need, however, to allocate some funds this year to start the  
 18   implementation, upon approval.

19   Specific needs:

20   Immediate:     Provisions of water dispensers to Academic and Administrative clusters without  
 21                   existing water dispensers

22   Second Sem and Next Year:

23                   Installation of Water Refilling Stations (drinking water purification system) and  
 24                   Drinking Fountains

25   Sec. 15. *Separability Clause.* – If any part or provision of this Policy is held invalid or unconstitutional,  
 26   other provisions not affected thereby shall remain in force and effect.

27   Sec. 16. *Repealing Clause.* All laws, decrees, issuances, rules and regulations, or parts thereof  
 28   inconsistent with the provisions of this proposed policy are hereby repealed or modified  
 29   accordingly.

30   Sec. 17. *Effectivity.* – This Policy shall take effect immediately upon approval from the Mindanao  
 31   State University System Board of Regents [MSU-BOR].

32   **REFERENCES:**

- 33   1) Republic Act 9003. Ecological Solid Waste Management Act of 2000.
- 34   2) Senate Bill No. 246. Single-Use Plastics Regulation and Management Act of 2022 Filed on July
- 35   11, 2022, by Legarda, Loren B., Villanueva, Joel, Villar, Mark A.
- 36   3) Senate Bill No. 2209. Plastic Straws Ban Act. Filed on May 17, 2023, by Villar, Cynthia A.
- 37   4) Memorandum Order 285 s. 2019. Adoption of "Ban on Single-Use Plastic" Policy in all Offices in
- 38   the Bangsamoro Autonomous Region
- 39   5) UNEP (2018). SINGLE-USE PLASTICS: A Roadmap for Sustainability
- 40   6) BOR Resolution No. 59 s. 2014. The Comprehensive Solid Waste Management Program of
- 41   Mindanao State University-Iligan Institute of Technology

42   Acknowledgment:



- 1 RAEC for initial comments
- 2 Jayson Leigh Segovia (faculty, CFES) for assistance in writing the policy